

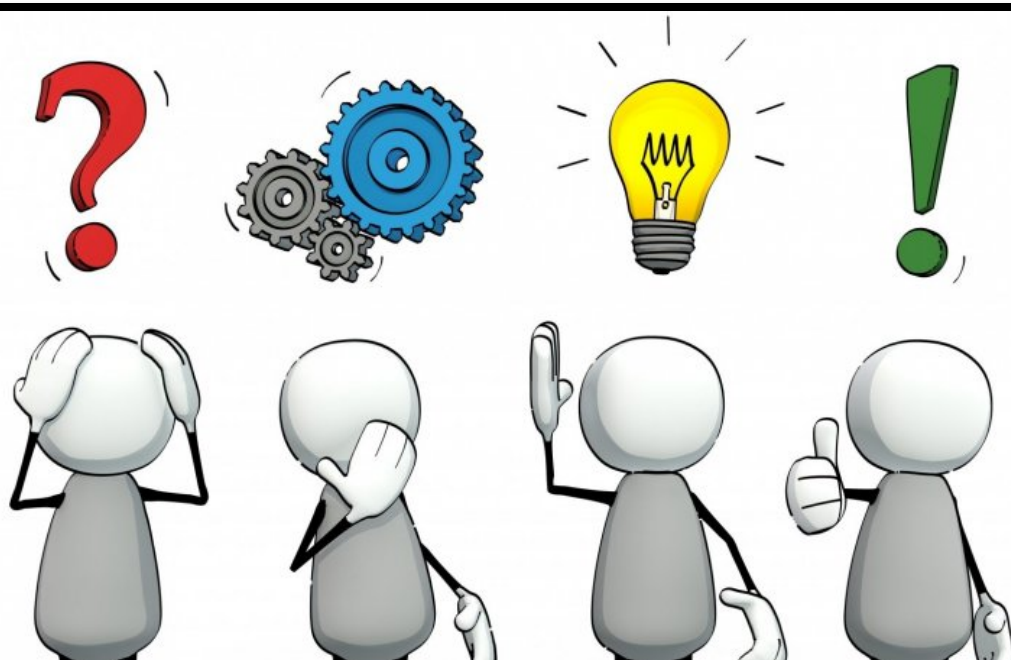


**Respect Responsibility Personal Best**

# **2021 Year 10**

# **Assessment**

# **Information**



# Contents



Section	Page Number
Introduction	3
<b>Assessment Schedules</b>	
○ English	11
○ Maths 5.1/ 5.2	12
○ Maths 5.2/ 5.3	13
○ Science	14
○ Geography	15
○ History	16
○ PD/H/PE	17
○ Art of Drawing	19
○ Child Studies	20
○ Food Technology	21
○ IT Timber	22
○ IT Metal	23
○ IST	24
○ Marine Studies	25
○ Music	26
○ PASS	27
○ PASS Outdoor Education	28
○ Photography & Digital Media	29
○ Visual Art	30

# Introduction

This document has been developed to make clear the procedures, expectations and rules about assessment at Lake Munmorah High School.

The first pages are the school's policy on assessment in Year 10.

The remaining pages are the assessment schedules for each subject, including:

- the assessment tasks which will take place throughout the year.
- when each task will take place.
- how much each task is worth.

## **WHAT IS ASSESSMENT?**

Assessment is how teachers measure your success as a learner.

## **ASSESSMENT OF LEARNING IN YEAR 10**

Assessment of Learning determines your level of performance on a specific task or at the conclusion of a unit of work, a school year or stage. The information gained from this type of assessment is often used in reporting.

## **ASSESSMENT FOR LEARNING IN YEAR 10**

Assessment For Learning gives you opportunities to produce work that leads to the development of knowledge, understanding and skills. Teachers decide how and when to assess your achievement, as they plan the work you will do, using a whole range of strategies including self-assessment and peer-assessment.

<b>Assessment Of Learning (Formal)</b> - Assessment that usually occurs at the end of a unit to check your overall understanding	<b>Assessment For Learning (Informal)</b> - Assessment that checks your progress along the way to make sure that you are learning as the teacher moves through the unit of work
<ul style="list-style-type: none"><li>○ Assessment Tasks/ Unit Tests</li><li>○ Projects/ Research assignments</li><li>○ Oral engagement/ presentations</li><li>○ Practical tasks &amp; artworks</li><li>○ Portfolios</li><li>○ Practical performances &amp; compositions</li><li>○ Half yearly &amp; Yearly examinations</li></ul>	<ul style="list-style-type: none"><li>○ Observation of student learning</li><li>○ Classroom activities</li><li>○ Homework assignments</li><li>○ Mini tests</li><li>○ Group and pair work</li><li>○ Experiments/ performances</li><li>○ Bookwork</li></ul>

## **HOMEWORK GUIDELINES**

Homework is a very important part of learning. You are responsible for regularly reviewing and consolidating the work which has been covered in lessons at home. This is complemented by formal work including projects and assessment tasks that are set by the class teacher.

Homework is an important part of the Curriculum but varies with different subjects and individual student needs.

Homework will not necessarily be given every night in each subject. It is expected that you develop a pattern of regular revision.

Homework needs to be balanced with family, social and extracurricular activities.

You can help yourself by:

- writing down all details of homework in your school diary;
- recording due dates for tasks and major assignments in your diary;
- planning your homework task completion appropriately - not leaving work to the last minute;
- ensuring your homework is completed to a high standard and
- submitting assigned work punctually.

## **EXPECTED STUDENT CONDUCT DURING EXAMINATIONS**

Exam conditions shall apply from when the first student enters the classroom until the dismissal of students.

1. NO electronic devices, except approved calculators, are to be used during any examination.
2. Complete silence MUST be adhered to whilst you are in the classroom/hall.
3. You MUST sit facing the front and are NOT to turn around or look at any other paper
4. You are NOT to communicate with any other student in any way.
5. You must remain for the entire duration of every exam.
6. You MUST obey all reasonable instructions given by supervisors.
7. Borrowing is NOT permitted.
8. All enquiries are to be addressed to classroom teacher by raising your hand and waiting patiently.

If the above examination rules are not followed, a warning will be given. If the inappropriate behaviour continues, you will be given a zero mark and removed from the classroom/hall and referred to the Head Teacher.

If you are absent from an examination, you MUST provide a satisfactory reason (e.g. a Doctor's Certificate for illness) and immediately upon returning to school complete an Illness/Misadventure form and submit it to your Deputy Principal for consideration. If a satisfactory reason is not provided, you will receive a zero mark for this assessment.

## **PROCEDURE FOR MISSED OR LATE SUBMISSION OF ASSESSMENT TASKS**

When an assessment task is during class time, you must attend school for all lessons on that day. (i.e. a student cannot miss lessons to prepare for their assessment task).

### **ABSENCE DUE TO ILLNESS / MISADVENTURE**

Students who are absent from school on the due date of an assessment task, examination or the day a hand-in task is due, must supply acceptable documentation; e.g.: Doctors Certificate for illness, accompanied by a note from a parents/ carer explaining the reason for the absence, via the Illness/ Misadventure process on their first day back at school.

If the Deputy Principal, Head Teacher and Year Advisor approve the Illness/ Misadventure, you will then be notified of the resolution of this task; e.g.; completion of the task or an estimate.

If no satisfactory reason is given, or if this process is not followed, the student will receive a zero mark for the task.

### **OTHER CIRCUMSTANCES RELATING TO ILLNESS OR MISADVENTURE**

When you present for an examination or assessment task while ill, or fall ill during the course of the examination or assessment task, you may make a claim for misadventure. You must obtain a Doctor's Certificate, covering the day of the assessment. This should be submitted to the Deputy Principal via the Illness/ Misadventure process on the day of your return to school.

### **LATE SUBMISSION OF ASSESSMENT TASKS**

If you do not hand in an assessment task or attend an in-class assessment or examination by the date on which it is due, you need to supply acceptable documentation; e.g.: Doctor's Certificate for illness, Funeral program/ notice, Police Report (or report number), accompanied by a completed Illness/ Misadventure form, to the relevant Deputy Principal on their first day back at school.

If the Head Teacher approves the Illness/ Misadventure, the Head Teacher will then determine the resolution of this task; e.g.; completion of the task or an estimate.

If no satisfactory reason is given, or if this process is not followed, the student will receive a zero mark for the task.

### **ELECTRONIC OR ONLINE SUBMISSION OF ASSESSMENT TASKS**

- You are not to assume that you may submit assessment tasks by email or by other digital media. However, on some occasions the Head Teacher or Teacher may allow you to submit electronically. Head Teachers/ Subject.

Teachers may also require you to hand in a printed copy of the task. Any such instructions will be made clear to you on the assessment task notification.

When this is required or permitted, your task may be submitted on USB or by email. When electronic submission does occur, the following rules will apply:

1. The school will not be responsible for unreadable, unusable or virus infected files or media.
2. The school will only accept assessment tasks which are written in applications to which school staff have ready access, and in a format which can be read by most school computers.
3. The assessment task should be readily identifiable.

An assessment task is not considered submitted if conditions (1), (2) and (3) are not satisfied.

The school will not be responsible for not receiving emails, however, it is recommended you maintain a copy of your sent email as verification if a problem arises.

## **ALLEGED MALPRACTICE IN ASSESSMENT TASKS OR EXAMINATIONS**

Malpractice, or cheating, is defined as “dishonest behaviour by a student that gives them an unfair advantage over others.”

Plagiarism is copying someone else’s work and pretending that it is your own.

Examples of malpractice:

Malpractice may include:

- plagiarism (copying someone else’s work in part or in whole, and claiming that it is your work);
- collusion (allowing someone to copy your work);
- forbidden aids (this would include bringing into an examination situation secret notes, or any helpful electronic device not specifically allowed, whether or not it is used).
- using material directly from books, journals, CDs or the internet or any other source without reference to the source
- building on the ideas of another person without referring to the source

Allegations of plagiarism or other forms of malpractice will be reported to the Head Teacher who will investigate the matter and, if proven, a zero will be awarded for the section that has been plagiarised, or for the whole task.

Strategies to assist you:

We attempt to assist you to avoid malpractice by:

1. Classroom and other teachers instructing you in good and ethical practice.
2. Signs being displayed in appropriate areas, including the Resource Centre, explaining aspects of good practice.

## **PROCEDURES FOR YOU TO FOLLOW WHEN INVOLVED IN NON-SCHOOL SPORT AND OTHER ACTIVITIES**

Lake Munmorah High School supports students who participate in both school-based and non-school-based sporting and other activities.

Generally, school-based sporting or other activities do not impact on the distribution/sitting/handling in of assessment tasks since school routines and calendars accommodate and communicate this information in advance.

Students will be required to complete assessment tasks prior to any participation that may impact on completing assessment. All other consideration will be given during the Illness/Misadventure process to the circumstances but generally we would encourage students to speak to staff prior to any event to ensure their assessment is not impacted.

## **RECORD OF SCHOOL ACHIEVEMENT**

The NSW Education Standards Authority (NESA) issues the Record of School Achievement (RoSA) to eligible students who leave school before completing the Higher School Certificate (HSC).



The RoSA is a cumulative credential, meaning it contains a student's record of academic achievement up until the date they leave school. This could be between the end of Year 10 up until and including some results from Year 12.

The RoSA records completed Stage 5 (Year 10) and Preliminary Stage 6 (Year 11) courses and grades, HSC (Year 12) results, and where applicable participation in any Preliminary Stage 6 courses or HSC courses not completed.

The RoSA is useful to students leaving school prior to the HSC because they can show it to potential employers or places of further learning.

The RoSA is also available to students who, from 2020, have not demonstrated the HSC minimum standard to receive their HSC.

### **Eligibility for a RoSA**

To be eligible for a RoSA, students must have:

- Completed the mandatory curriculum requirements for Years 7 to 10.
- Attended a government school, an accredited non-government school or a recognised school outside NSW.
- Completed courses of study that satisfy Education Standards' curriculum and assessment requirements for the RoSA.
- Complied with the requirements from the Education Act.

## **School attendance**

We don't set minimum attendance for the satisfactory completion of a course. However, a principal may determine that, due to absence, course completion criteria may not be met.

To receive a RoSA, students must attend school until the final day of Year 10.

They must also complete the following mandatory Years 7-10 curriculum requirements.

- English: Our syllabus must be studied substantially throughout Years 7–10. By the end of Year 10, 400 hours need to be completed.
- Mathematics: Our syllabus must be studied substantially throughout Years 7–10. By the end of Year 10, 400 hours need to be completed.
- Science: Our syllabus must be studied substantially throughout Years 7–10. By the end of Year 10, 400 hours need to be completed.
- Human Society and its Environment: Our syllabus must be studied substantially throughout Years 7–10. By the end of Year 10, 400 hours need to be completed. This must include 100 hours each of History and Geography in each Stage.
- Languages Other than English: 100 hours to be completed in one language over one continuous 12-month period between Years 7–10 but preferably in Years 7–8.
- Technological and Applied Studies: Our Technology (mandatory) Years 7–8 syllabus to be studied for 200 hours.
- Creative Arts: Two hundred hours to be completed, consisting of our 100-hour mandatory courses in each of Visual Arts and Music. We expect that the 100-hour mandatory courses in these subjects will be taught as coherent units of study and not split over a number of years.
- Personal Development, Health and Physical Education: Our mandatory 300-hour course to be completed. This integrated course is to be studied in each of Years 7–10.

## **'N' determinations**

If students don't complete a course's requirements they will receive an 'N' determination.

Students are warned via a letter from their school if it looks like they might receive an 'N' determination. This aims to give the student time to complete the course requirements and rectify the problem.

If a student receives an 'N' determination in a mandatory curriculum requirement course, they won't be eligible for the RoSA. If they leave school, they will receive a Transcript of Study that will list the mandatory course(s) that received an 'N' determination.

If a student is given an 'N' determination in a non-mandatory course, the course will not appear on their RoSA or Transcript of Study.

It should also be noted that non completion of Year 10 course requirements that results in an N determination being submitted and upheld by NESAs may effect a student's ability to proceed into corresponding Stage 6 courses. In some cases the Principal may determine a student must repeat and satisfactorily complete a Year 10 course prior to continuing their studies into Stage 6.



## **GRADES YEAR 10**

For Half-Yearly and Yearly Reports, Head Teachers give you a grade to reflect your academic achievement within each course. Grades will also be reported to NESAs in Term 4 each year.

### **Meaning of Grades**

The meaning of grades allocated to you is explained as follows:

<b>A</b>	The student has an extensive knowledge and understanding of the content and can readily apply this knowledge. In addition, the student has achieved a very high level of competence in the processes and skills and can apply these skills to new situations.
<b>B</b>	The student has a thorough knowledge and understanding of the content and a high level of competence in the processes and skills. In addition, the student is able to apply this knowledge and these skills to most situations.
<b>C</b>	The student has a sound knowledge and understanding of the main areas of content and have achieved an adequate level of competence in the processes and skills.
<b>D</b>	The student has a basic knowledge and understanding of the content and have achieved a limited level of competence in the processes and skills.
<b>E</b>	The student has an elementary knowledge and understanding in few areas of the content and have achieved very limited competence in some of the processes and skills

## **YEAR 10 CORE SUBJECT** **ASSESSMENT SCHEDULES**

Please note: The following schedules apply to all students in Year 10 (with the exception of Life Skills students and the applicable Maths course)

*Dates and Outcomes are indicative and will be confirmed via the assessment notification, Sentral calendar and CANVAS platform.*



# Lake Munmorah High School

## 2021 Assessment Schedule - Stage 5

# Year 10 English

### Course Outcomes:

Outcomes can be found using the following link

<https://educationstandards.nsw.edu.au/wps/wcm/connect/1c3d7c13-87c1-402a-a43e-897a4b7dd74c/english-k10-syllabus.pdf?MOD=AJPERES&CVID=>

		Task 1	Task 2	Task 3	Task 4
<b>Task Type</b>		Essay	Interview with a director	Group research project	Multimodal Pitch - Advertising
<b>Topics</b>		Close Study of Fiction	Film Study – Close study of a Director	Shakespeare – Close study of a play	Multimedia – The World we live in
<b>Due Date</b>		Week 9, Term 1 2021	Week 5, Term 2 2021	Week 9, Term 3 2021	Week 5, Term 4 2021
<b>COMPONENT</b>	<b>Multimodal Presentation</b>				25%
	<b>Critical Response</b>		25%		
	<b>Reading and Representing</b>			25%	
	<b>Extended Response</b>	25%			
<b>Weighting</b>		<b>25%</b>	<b>25%</b>	<b>25%</b>	<b>25%</b>
<b>Outcomes Assessed</b>		EN5 – 2A EN5 – 4B EN5 – 3B	EN5 – 6C EN5 – 7D EN5 – 8D	EN5 – 3B EN5 – 6C EN5 – 9E	EN5 – 1A EN5 – 5C EN5 – 7D

*Dates and Outcomes are indicative and will be confirmed via the assessment notification.*



# Lake Munmorah High School

## 2021 Assessment Schedule - Stage 5.1/5.2

# Year 10 Mathematics

### Course Outcomes:

Outcomes can be found using the following link

<http://syllabus.bostes.nsw.edu.au/mathematics/mathematics-k10/>

		Task 1	Task 2	Task 3	Task 4
<b>Task Type</b>		In Class Examination	Online Canvas Quiz	Project Based Task	Yearly Examination 1.5 hours
<b>Topics</b>		Financial Mathematics Area and Surface Area	Volume Single Variable Data Analysis Probability	Right Angled Triangles	All Topics
<b>Due Date</b>		Week 7, Term 2, 2021	Week 6, Term 2, 2021	Week 7, Term 3, 2021	Week 6, Term 4, 2021
<b>COMPONENT</b>	<b>Understanding, Fluency and Communication</b>	15%	5%	10%	20%
	<b>Problem Solving, Reasoning and Justification</b>	15%	5%	10%	20%
	<b>Weighting</b>	<b>30%</b>	<b>10%</b>	<b>20%</b>	<b>40%</b>
	<b>Outcomes Assessed</b>	MA5.2-11MG MA5.2-6 NA	MA5.2-12MG MA5.2-15SP MA5.1-13SP	MA5.1-10MG; MA5.2-13MG	All Outcomes

*Dates and Outcomes are indicative and will be confirmed via the assessment notification, Sentral calendar and CANVAS platform.*



Lake Munmorah High School

## 2021 Assessment Schedule - Stage 5.2/5.3

# Year 10 Mathematics

### Course Outcomes:

Outcomes can be found using the following link

<http://syllabus.bostes.nsw.edu.au/mathematics/mathematics-k10/>

		Task 1	Task 2	Task 3	Task 4
	<b>Task Type</b>	In Class Examination	Online Canvas Quiz	In Class Examination	Yearly Examination 1.5 hours
	<b>Topics</b>	Bivariate Data Analysis Rates and Ratios Non Linear Relationships	Probability Algebraic Techniques  Single Variable Data Analysis	Volume Linear Relationships  Area and Surface Area Equations	All Topics
	<b>Due Date</b>	Week 8, Term 1, 2021	Week 6, Term 2, 2021	Week 8, Term 3, 2021	Week 6, Term 4, 2021
<b>COMPONENT</b>	<b>Understanding, Fluency and Communication</b>	10%	10%	10%	20%
	<b>Problem Solving, Reasoning and Justification</b>	10%	10%	10%	20%
	<b>Weighting</b>	<b>20%</b>	<b>20%</b>	<b>20%</b>	<b>40%</b>
	<b>Outcomes Assessed</b>	MA5.2-16SP MA5.2-5NA MA5.1-7NA MA5.2-10NA	MA5.1-15SP MA5.3-18SP MA5.3-5NA	MA5.3-8NA MA5.2-12MG MA5.3-14MG MA5.3-7NA	All Outcomes

*Dates and Outcomes are indicative and will be confirmed via the assessment notification, Sentral calendar and CANVAS platform.*



# Lake Munmorah High School

## 2021 Assessment Schedule - Stage 5

### Year 10 Science

#### Course Outcomes:

Outcomes can be found using the following link:

<http://syllabus.nesa.nsw.edu.au/stage-4-outcomes/>

- Note that examinations will be open book examinations.
- Examinations will consist of four sections: Knowledge and Understanding; Problem Solving; Comprehension; Science Skills
- Questions in examinations will range in difficulty to cover all standards of an A-E grade.
- Project Based Learning and Depth studies will be staggered by class throughout terms 1 and 3 to ensure resources are available. Classroom teachers will notify their classes 2 weeks prior to their start times.

	Task 1	Task 2	Task 3	Task 4	Task 5
Task Type	Depth Study	Term 1 Exam	Term 2 Exam	Project Based Learning	Term 4 Exam
Delivery	In Class	Written Exam	Written Exam	In Class	Written Exam
Topic(s)	Individual Student Research Project	Motion / Electricity and Ohms law	Chemical Reactions / Energy in Chemical Reactions	Fossils and Evolution	Reproduction and Genetics / Fossils and Evolution / Energy in Society
Brief Outline	Students will be asked to choose a problem in an area that interests them, and design, conduct and analyse an experiment to solve this problem.	Students will complete a written exam that consists of multiple choice, short answer and extended response questions based on the topics above.	Students will complete a written exam that consists of multiple choice, short answer and extended response questions based on the topics above.	Students will work in groups on a project that contains the essential question: 'How does the environment impact living things?'	Students will complete a written exam that consists of multiple choice, short answer and extended response questions based on the topics above.
Week Due	Week 5 Term 1	Week 11 Term 1	Week 10 Term 2	Term 3	Week 4 Term 4
Outcomes	Knowledge	10PW / 11PW	17CW	LW14	11PW / 14LW / 15LW
	Skills	4WS / 5WS / 6WS / 7WS / 8WS / 9WS	4WS / 7WS / 8WS / 9WS	4WS / 5WS / 6WS / 7WS / 8WS / 9WS	4WS / 7WS / 8WS / 9WS
	Weighting	20%	20%	20%	20%

•



Lake Munmorah High School  
**2021 Assessment Schedule - Stage 5**  
**Year 10 Geography**

**Course Outcomes:**

Outcomes can be found using the following link

<https://educationstandards.nsw.edu.au/wps/portal/nesa/k-10/learning-areas/hsie/geography-k-10/outcomes>

**Semester 1**

	Task 1	Task 2	
<b>Task Type</b>	Research Task	Canvas Quiz	
<b>Topics</b>	Human Wellbeing	Geographical Skills	
<b>Due Date</b>	Term 1 Weeks 6-8	Term 2, Weeks 4 - 5	
<b>Weighting</b>	<b>50%</b>	<b>50%</b>	<b>100%</b>
<b>Outcomes Assessed</b>	GE5.1 GE5.2 GE5.3 GE5.6 GE5.7 GE5.8	GE5.1 GE5.2 GE5.5 GE5.7 GE5.8	



Lake Munmorah High School  
**2021 Assessment Schedule - Stage 5**  
**Year 10 History**

**Course Outcomes:**

Outcomes can be found using the following link

<https://educationstandards.nsw.edu.au/wps/portal/nesa/k-10/learning-areas/hsie/history-k-10/outcomes>

**Semester 2**

	Task 1	Task 2	
<b>Task Type</b>	Writing Task	Canvas Quiz	
<b>Topics</b>	Australia in The Vietnam War Era	All Topics	
<b>Due Date</b>	Term 3 Weeks 7 – 9	Term 4 Weeks 4 -5	
<b>Weighting</b>	<b>50%</b>	<b>50%</b>	<b>100%</b>
<b>Outcomes Assessed</b>	HT5.1 HT5.2 HT5.3 HT5.4 HT5.7 HT5.9 HT5.10	HT5.5 HT5.6 HT5.8	





Lake Munmorah High School

## 2021 Assessment Schedule - Stage 5

# Year 10 PDHPE

### Course Outcomes:

Course outcomes can be found by accessing the following link:

<https://educationstandards.nsw.edu.au/wps/portal/nesa/k-10/learning-areas/pdhpe/pdhpe-k-10-2018>

### **Semester One**

#### Assessment:

	Task 1	Task 2	Weighting
<b>Topic/s</b>	Road Safety	Dance	
<b>Task Type</b>	Research	Practical	
<b>Due Date</b>	Week 9 26 <sup>th</sup> March Term 1 2021	Week 6 5 <sup>th</sup> March Term 1 2021	
<b>Outcomes Assessed</b>	PD5-2  PD5-10	PD5-5  PD5-11	
<b>Marks</b>	<b>25</b>	<b>25</b>	<b>50</b>

### **Semester Two**

#### Assessment:

	Task 1	Task 2	Weighting
<b>Topic/s</b>	SEPEP	All topics	
<b>Task Type</b>	Practical	Yearly Examination	
<b>Due Date</b>	Week 10 17 <sup>th</sup> September Term 3 2021	Week 4-5 (Date T.B.C) Term 4 2021	
<b>Outcomes Assessed</b>	PD5-4  PD5-6	PD5-1 -  PD5-11	
<b>Marks</b>	<b>25</b>	<b>25</b>	<b>50</b>

## **YEAR 10 ELECTIVE SUBJECT** **ASSESSMENT SCHEDULES**

Please note: Students study two elective subjects and should refer to those specific Subject Assessment Schedules.

*Dates and Outcomes are indicative and will be confirmed via the assessment notification, Sentral calendar and CANVAS platform.*



# Lake Munmorah High School

## 2021 Assessment Schedule - Stage 5

# Year 10 Art of Drawing

### Course Outcomes:

Outcomes can be found on the following link:

[https://educationstandards.nsw.edu.au/wps/wcm/connect/56c7920b-49bd-46a0-8c31-127cff7b3762/visual\\_arts\\_710\\_syl.pdf?MOD=AJPERES&CVID=](https://educationstandards.nsw.edu.au/wps/wcm/connect/56c7920b-49bd-46a0-8c31-127cff7b3762/visual_arts_710_syl.pdf?MOD=AJPERES&CVID=)

### Assessment:

		Task 1	Task 2	Task 3	Task 4
<b>Task Type</b>		Artist Case Studies + Critical Historical Study in Visual Art Diary	Practical Artmaking Portfolio (Part A)	Artist Case Studies + Critical Historical Study in Visual Art Diary	Practical Artmaking Portfolio (Part B)
<b>Due Dates</b>		Semester 1 Week 10 Term 1	Semester 1 Week 7 Term 2	Semester 2 Week 10 Term 3	Semester 2 Week 6 Term 4
<b>Weighting</b>		20%	30%	20%	30%
<b>COMPONENT</b>	<b>Making</b>		30		30
	<b>Critical &amp; Historical</b>	20		20	
	<b>Marks</b>	20	30	20	30
	<b>Outcomes Assessed</b>	5.7 – 5.10	5.1 – 5.6	5.7 – 5.10	5.1 – 5.6



# Lake Munmorah High School

## 2021 Assessment Schedule - Stage 5

# Year 10 Child Studies

### Course Outcomes:

Outcomes can be found on the following link:

<https://www.educationstandards.nsw.edu.au/wps/portal/nesa/k-10/learning-areas/pdhpe/child-studies-7-10-2019>

Life Skills Outcomes can be found on the link above. Pages 51 -54

### Assessment Schedule:

		Task 1	Task 2	Task 3	Task 4	Task 5
<b>Task Type</b>		Childhood Diseases & Disorders	Food & Nutrition	Media & Technology	Childcare services & My Career	Yearly Exam
<b>Due Date</b>		Term 1 Wk 9	Term 2 Wk 5	Term 3 Wk 9	Term 4 Wk 5	Term 4 Week 5/6
<b>Weighting</b>		<b>20</b>	<b>20</b>	<b>20</b>	<b>20</b>	<b>20</b>
<b>Outcomes Assessed</b>		CS5-2 CS5-4 CS5-8 CA 5-9 CS5-11	CS5-8 CA 5-9 CS5-11	CS 5-3 CS5-4 CS5-8 CS 5-9	CS 5-3 CS 5-5 CS 5-8 CS 5-9 CS 5-10	CS 5-2 to CS5-10
<b>COMPONENTS</b>	Knowledge and understanding of child development in the early years	60%			20%	25%
	Knowledge and understanding and skills required to positively influence growth, development and wellbeing of children	20%	60%	20%	20%	25%
	Knowledge and understanding of external factors that support the growth, development and wellbeing of children		20%	60%	20%	25%
	Skills in researching, communicating and evaluating issues related to child development	20%	20%	20%	40%	25%
	Component Total	100%	100%	100%	100%	100%



# Lake Munmorah High School

## 2021 Assessment Schedule - Stage 5

# Year 10 Food Technology

### Course Outcomes:

Outcomes can be found on the following link:

<https://www.educationstandards.nsw.edu.au/food-technology-years-7-10-syllabus-2019> page 14-16

Life Skills Outcomes can be found on pages 57

### Assessment Schedule:

	Task 1	Task 2	Task 3	Task 4	Task 5
Task Type	Food for Special Needs	Food Equity	Food Product Development: Food Innovations	Food Service and Catering	Yearly Exam
Due Date	Term 1 Week 9	Term 2 Week 5	Term 3 Week 5	Term 4 Week 4	Term 4 Week 5/6
Weighting	20	20	20	20	20
Outcomes Assessed	FT5-1,FT5-2, FT5-5,FT5-6, FT5-7,FT5-8, FT5-9,FT5-10, FT5-11,FT5-12, FT5-13	FT5-1,FT5-2, FT5-5,FT5-6, FT5-7,FT5-8, FT5-9,FT5-10, FT5-11,FT5-12, FT5-13	FT5-1, FT5-2, FT5-5, FT5-7, FT5-8, FT5-9, FT5-10, FT5-11, FT5-12, FT5-13	FT5-1, FT5-2, FT5-3, FT5-4, FT5-5, FT5-6, FT5-7, FT5-10, FT5-11, FT5-13	FT5-1/13
<b>COMPONENT</b>	Knowledge and understanding of food properties, processing and preparation and their interrelationship to produce quality food		60%		20%
	Knowledge and understanding of nutrition and food consumption, and the consequences of food choices on health	20%	20%		20%
	Knowledge and understanding of nutrition and food consumption, and the consequences of food choices on health	60%			20%
	Skills in researching, evaluating and communicating issues in relation to food	20%	20%	20%	
	Skills in designing, producing and evaluating solutions for specific food purposes			60%	20%
	Knowledge and understanding of the significant role of food in society.	20%	60%	20%	20%
<b>Component Total</b>		100	100	100	100



# Lake Munmorah High School

## 2021 Assessment Schedule - Stage 5

# Year 10 Industrial Technology

# Timber

### Course Outcomes:

Outcomes can be found on the following link:

[http://www.boardofstudies.nsw.edu.au/syllabus\\_sc/pdf\\_doc/indust\\_tech\\_710\\_syllabus.pdf](http://www.boardofstudies.nsw.edu.au/syllabus_sc/pdf_doc/indust_tech_710_syllabus.pdf) page 12-13

### Assessment:

		Task 1	Task 2	Task 3	Task 4*	Task 5
Task Type		WHS- Computer Competency	Minor Project – Timber Joints	Major Project & Folio– Display Cabinet or Coffee Table	Extension Project – Woodturning or Skateboard Deck	Yearly Exam
Due Date		Term 1 Wk 4	Term 1 Wk 8	Term 4 Wk 3	Term 4 Wk 9	Term 4 Wk 4
Weighting		10	20	50	0	20
Outcomes Assessed		IND5-1, IND5-7	IND5-1, IND5-2, IND5-3, IND5-4, IND5-5, IND5-6, IND5-7, IND5-8	IND5-1, IND5-2, IND5-3, IND5-4, IND5-5, IND5-6, IND5-7, IND5-8, IND5-9, IND5-10	IND5-4, IND5-5, IND5-6, IND5-7,	IND5-1, IND5-2, IND5-3, IND5-4, IND5-5, IND5-6, IND5-7, IND5-8, IND5-9, IND5-10
COMPONENT	Knowledge and understanding	60	50	50		60
	Investigating and Researching	10	10	15		
	Communicating	10	20	10		15
	Interpreting data	10	20	10		20
	Problem-solving	10	0	15		5
	<b>Component Total</b>	100	100	100		100

Note: \* - Task 4 is an extension exercise and is non-assessable.



# Lake Munmorah High School

## 2021 Assessment Schedule - Stage 5

# Year 10 Industrial Technology

# Metal

### Course Outcomes:

Outcomes can be found on the following link:

[http://www.boardofstudies.nsw.edu.au/syllabus\\_sc/pdf\\_doc/indust\\_tech\\_710\\_syllabus.pdf](http://www.boardofstudies.nsw.edu.au/syllabus_sc/pdf_doc/indust_tech_710_syllabus.pdf) page 12-13

### Assessment Schedule:

		Task 1	Task 2	Task 4	Task 5
<b>Task Type</b>		Class theory & practical tasks	Portable BBQ and folio	Individual Project and folio	Yearly Exam
<b>Due Date</b>		Term 1 Wk 9	Term 2 Wk 6	Term 4 Wk 4	Term 4 Wk 5
<b>Weighting</b>		<b>15</b>	<b>30</b>	<b>30</b>	<b>25</b>
<b>Outcomes Assessed</b>		IND51 IND52	IND53 IND54 IND55 IND57	IND56 IND58 IND59 IND510	IND51, IND52, IND53, IND54 IND55, IND56 IND57, IND58 IND59, IND510
<b>COMPONENT</b>	Knowledge and understanding	60	20	20	60
	Investigating and Researching		40	40	
	Communicating		20	20	
	Interpreting data	20			20
	Problem-solving	20	20	20	20
	<b>Component Total</b>	<b>100</b>	<b>100</b>	<b>100</b>	<b>100</b>



# Lake Munmorah High School

## 2021 Assessment Schedule - Stage 5

# Year 10 Information & Software Technology

### Course Outcomes:

Outcomes can be found on the following link:

<https://www.educationstandards.nsw.edu.au/wps/portal/nesa/k-10/learning-areas/technologies/information-software-technology> pages 12-13

### Assessment Schedule:

	Task 1	Task 2	Task 3	Task 4	Task 5
<b>Task Type</b>	Authoring & Multimedia	Artificial Intelligence, Simulation & Modelling	Group Project Robotics	Networking Systems	Yearly Exam
<b>Due Date</b>	Term 1 Week 10	Term 2 Wk 10	Term 3 Wk 8	Term 4 Wk 5	Term 4 Week 5/6
<b>Weighting</b>	<b>20</b>	<b>20</b>	<b>30</b>	<b>15</b>	<b>15</b>
<b>Outcomes Assessed</b>	5.2.1, 5.2.2, 5.2.3, 5.5.2	5.2.1, 5.2.2, 5.2.3, 5.3.2, 5.5.1	5.1.1, 5.1.2, 5.2.1, 5.2.2, 5.5.1	5.1.1, 5.1.2, 5.3.2	5.2.3, 5.3.1, 5.4.1, 5.5.3
<b>COMPONENT</b>	Computer software and hardware	5	5		5
	Problem solving and critical thinking to design & develop creative IST solutions		5	10	
	Responsible and ethical attitude related to the use of ISTs			5	5
	The effects of past, current and emerging ISTs on the individual and society	5			5
	Communication and collaborative work for IST solutions for specific problems			10	
	Option Topics	10	10	10	
	<b>Component Total</b>	<b>20</b>	<b>20</b>	<b>30</b>	<b>15</b>





## Lake Munmorah High School

# 2021 Assessment Schedule - Stage 5

# Year 10 Marine Studies

### Course Outcomes:

Outcomes can be found on the following link:

<https://educationstandards.nsw.edu.au/wps/portal/nesa/k-10/learning-areas/technologies/marine-aquaculture-technology>

### Assessment:

	Task 1	Task 2	Task 3	Task 4
<b>Task Outline</b>	Water Safety & Snorkelling Skills Assessment	Boating Safety and Skills	Aquarium Construction, Maintenance and Design	Yearly Exam
<b>Task Type</b>	Theory & Practical Skills Assessment	Boating License Theory Test & Practical Skills Assessment	Theory and Practical Skills Assessment	50 Multiple Choice Question Exam
<b>Due Date</b>	Week 6 Term 1, 2021	Week 6 Term 2, 2021	Week 6 Term 3, 2021	Week 4 Term 4 2021
<b>Outcomes Assessed</b>	MAR5-9, MAR5-10, MAR5-11, MAR5-14	MAR5-9, MAR5-10, MAR5-13, MAR5-14	MAR5-9, MAR5-10, MAR5-9, MAR5-13, MAR5-14	All MAR5- 1 through 14
<b>Syllabus Component</b>	Core 1 & Module 17 – Open Water Snorkelling	Module 33 – Small motorboats Module 34 – Advanced motorboating	Module 22 – Aquarium Design, Construction and Maintenance	All aspects of core and optional modules covered throughout the year
<b>Weighting</b>	25%	25%	25%	25%

\* Please note that assessment tasks are subject to change due to seasonal variations, weather, excursions and excursion cancellations, availability or resources and variances of programs like SCUBA, external first aid course providers and “Boatsmart”. If any changes are to occur, advance notification will be provided.



# Lake Munmorah High School

## 2021 Assessment Schedule - Stage 5

# Year 10 Music

### Course Outcomes:

Outcomes can be found on the following link:

[https://www.boardofstudies.nsw.edu.au/syllabus\\_sc/pdf\\_doc/music\\_710\\_syllabus.pdf](https://www.boardofstudies.nsw.edu.au/syllabus_sc/pdf_doc/music_710_syllabus.pdf)

### Assessment:

	Task 1	Task 2	Task 3	Task 4
Task Type	Composition/ Performance	Portfolio Aural	Performance Portfolio	Viva Voce
Due Date	<u>TERM 1</u> Check Point Wk 5  <b>Formal Wk 10</b>	<u>TERM 2</u>  <b>Wk 3 – 10%</b>  <u>TERM 4</u> <b>Wk 3 - 10%</b>	<u>TERM 2</u> Check Point Wk 5 <b>Formal Wk 10 – 10%</b>  <u>TERM 3</u> Check Point Wk 5 <b>Formal Wk 10 – 20%</b>  <u>TERM 4</u> Check Point Wk 3 <b>Formal Wk 6 – 20%</b>	<u>TERM 3</u>  <b>Wk 3</b>
Weighting	20	20	50	10
Outcomes Assessed	5.5, 5.6, 5.7, 5.8, 5.9, 5.10, 5.11, 5.12	5.7, 5.8, 5.9, 5.10, 5.11, 5.12	5.1, 5.2, 5.3, 5.5, 5.11, 5.12	5.7, 5.8, 5.9, 5.10, 5.11, 5.12
COMPONENT	Performance	<b>10</b>	<b>50</b>	
	Composition	<b>10</b>		
	Listening	<b>20</b>		<b>10</b>
	Total	/20	/20	/50
			/50	/10



# Lake Munmorah High School

## 2021 Assessment Schedule - Stage 5

# Year 10 PASS

### Course Outcomes:

Course outcomes can be found by accessing the following link:

<https://educationstandards.nsw.edu.au/wps/portal/nesa/k-10/learning-areas/pdhpe/physical-activity-sports-studies-7-10-2019>

### Semester One

#### Assessment:

	Task 1	Task 2	Weighting
<b>Topic/s</b>	Opportunities & Pathways	Coaching	
<b>Task Type</b>	Research	Practical	
<b>Due Date</b>	Week 7 11 <sup>th</sup> March Term 1 2021	Week 4 14 <sup>th</sup> May Term 2 2021	
<b>Outcomes Assessed</b>	PASS 5-4  PASS 5-10	PASS5-7  PASS5-8	
<b>Marks</b>	<b>25</b>	<b>25</b>	<b>50</b>

### Semester Two

#### Assessment:

	Task 1	Task 2	Weighting
<b>Topic/s</b>	Nutrition & Physical Activity	Individual Sports	
<b>Task Type</b>	Examination	Ongoing Practical	
<b>Due Date</b>	Week 6 12 <sup>th</sup> November Term 4 2021	Week 6 12 <sup>th</sup> November Term 4 2021	
<b>Outcomes Assessed</b>	PASS5-1  PASS5-2  PASS5-10	PASS5-5  PASS5-9	
<b>Marks</b>	<b>25</b>	<b>25</b>	<b>50</b>



# Lake Munmorah High School

## 2021 Assessment Schedule - Stage 5

# Year 10 PASS Outdoor Ed

### Course Outcomes:

Course outcomes can be found by accessing the following link:

<https://educationstandards.nsw.edu.au/wps/portal/nesa/k-10/learning-areas/pdhpe/physical-activity-sports-studies-7-10-2019>

## Semester One

### Assessment:

	Task 1	Task 2	Weighting
<b>Topic/s</b>	Safety in Outdoor Ed	Rock Climbing	
<b>Task Type</b>	Research	Ongoing Practical	
<b>Due Date</b>	Week 4 14 <sup>th</sup> May Term 2 2021	Week 10 25 <sup>th</sup> June Term 2 2021	
<b>Outcomes Assessed</b>	PASS 5-5, PASS 5-8 PASS 5-10	PASS 5-6 PASS 5-7	
<b>Marks</b>	<b>25</b>	<b>25</b>	<b>50</b>

## Semester Two

### Assessment:

	Task 1	Task 2	Weighting
<b>Topic/s</b>	Understanding the Weather	Ultimate Frisbee	
<b>Task Type</b>	Research	Practical	
<b>Due Date</b>	Week 7 27 <sup>th</sup> August Term 3 2021	Week 5 5 <sup>th</sup> November Term 4 2021	
<b>Outcomes Assessed</b>	PASS 5-1	PASS 5-4, PASS 5-5 PASS 5-9	
<b>Marks</b>	<b>25</b>	<b>25</b>	<b>50</b>



# Lake Munmorah High School

## 2021 Assessment Schedule - Stage 5

# Year 10 STEM

### Course Outcomes:

Outcomes can be found on the following link:

[https://sispprogram.schools.nsw.gov.au/stem/istem\\_stage\\_4.html](https://sispprogram.schools.nsw.gov.au/stem/istem_stage_4.html)

### Assessment Schedule:

		Task 1	Task 2	Task 3	Task 4	Task 5
Task Type		Electronics and coding	Drones	Motion	Extension Project	Yearly Exam
Due Date		Term 1 Wk 10	Term 3 Wk 10	Term 3 Wk 10	Term 4 Wk 9	Term 4 Wk 4
Weighting		30	25	30	0	15
Outcomes Assessed		5.2.1, 5.3.1, 5.3.2, 5.5.2, 5.6.1	5.3.2, 5.5.1, 5.7.1,5.8.1	5.1.1, 5.1.2, 5.3.2, 5.4.2, 5.5.1, 5.7.1	5.1.1, 5.1.2, 5.3.2, 5.4.1, 5.5.1	5.1.1, 5.1.2, 5.2.1, 5.2.2, 5.3.1, 5.3.2, 5.4.1, 5.4.2, 5.5.1, 5.5.2, 5.6.1, 5.6.2
COMPONENT	Research	30	20	20	0	5
	Skills	20	30	30	0	15
	Problem Solving	30	20	30	0	20
	Knowledge and understanding	20	30	20	0	60
	Component Total	100	100	100	0	100

Note: Task 4 is an extension exercise and is non-assessable.

Note: Dates and Outcomes are indicative and will be confirmed via the assessment notification.



# Lake Munmorah High School

## 2021 Assessment Schedule - Stage 5

# Year 10 Visual Art

### **Course Outcomes:**

Outcomes can be found on the following link:

[https://educationstandards.nsw.edu.au/wps/wcm/connect/56c7920b-49bd-46a0-8c31-127cff7b3762/visual\\_arts\\_710\\_syl.pdf?MOD=AJPERES&CVID=](https://educationstandards.nsw.edu.au/wps/wcm/connect/56c7920b-49bd-46a0-8c31-127cff7b3762/visual_arts_710_syl.pdf?MOD=AJPERES&CVID=)

### **Assessment:**

		Task 1	Task 2	Task 3	Task 4
<b>Task Type</b>		Artist Case Studies + Critical Historical Study in Visual Art Diary	Practical Artmaking Portfolio (Part A)	Artist Case Studies + Critical Historical Study in Visual Art Diary	Practical Artmaking Portfolio (Part B)
<b>Due Dates</b>		Semester 1 Week 10 Term 1	Semester 1 Week 7 Term 2	Semester 2 Week 10 Term 3	Semester 2 Week 6 Term 4
<b>Weighting</b>		20%	30%	20%	30%
<b>COMPONENT</b>	<b>Making</b>		30		30
	<b>Critical &amp; Historical</b>	20		20	
	<b>Marks</b>	20	30	20	30
	<b>Outcomes Assessed</b>	5.7 – 5.10	5.1 – 5.6	5.7 – 5.10	5.1 – 5.6