

Step 1

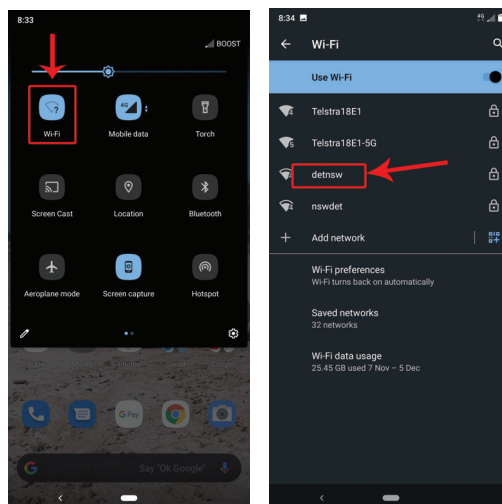
Drag down the quick access menu from the top of the screen.

- Make sure that Wifi is turned on.

Step 2

Press and hold the Wifi button to access the WiFi settings.

- Select '**DETNSW**' from the list of available networks.



Step 3

Enter the settings as follows;

EAP method: **PEAP**

Phase-2 authentication: **none**

CA Certificate: **Do not validate**

Identity: **your.username@detnsw**

Anonymous identity: *leave empty*

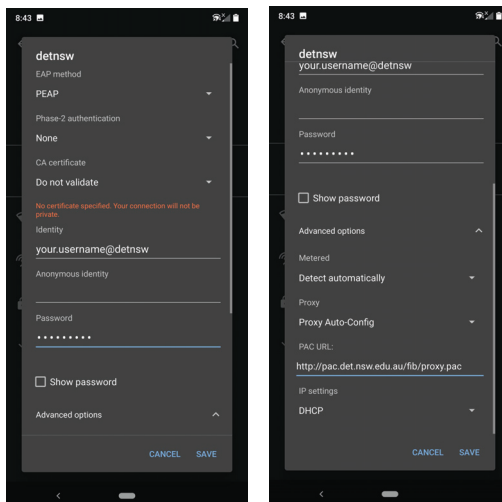
Password: **your school password**

Under '**Advanced options**' enter;

Proxy: **Auto-Config**

PAC URL: **<http://pac.det.nsw.edu.au/fib/proxy.pac>**

IP settings: **DHCP**



Then click '**Connect**'

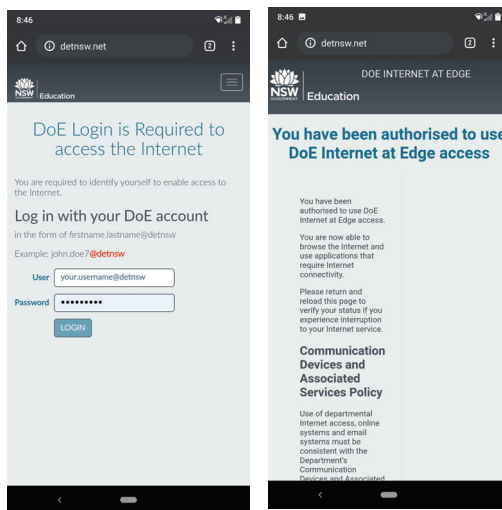
Step 4 - Repeat this every day

Open your Internet browser of choice eg. Chrome

- In the address bar type **detnsw.net** and hit enter

- The **DoE Internet At Edge Authentication Portal** should appear.

- Use the same username/password as before and click '**Login**'



**This enables your device to access the Internet for an 8hr period so needs to be done each day.