
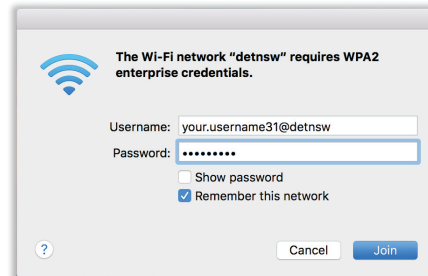


Connecting to DETNSW WiFi - Mac OS

Step 1

Click on the WiFi icon  at the top right of the screen.

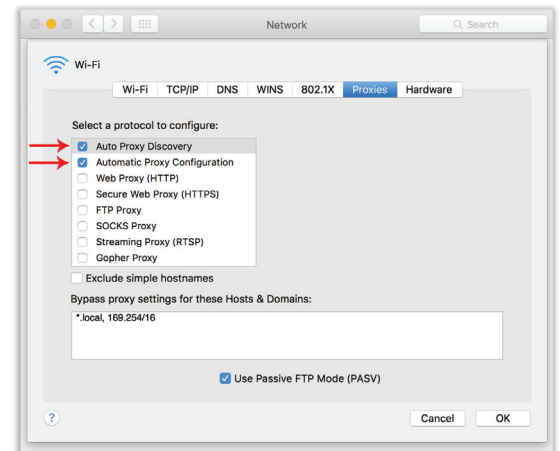
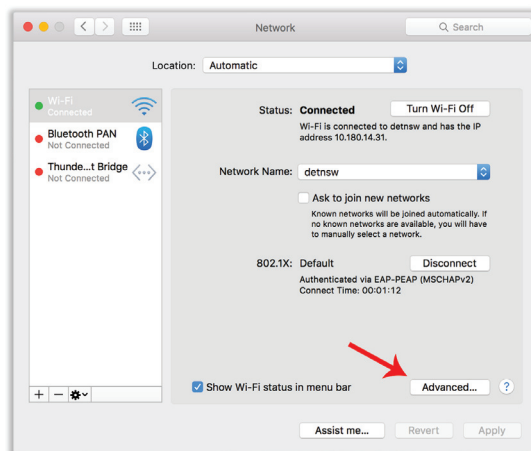
- Here, make sure the WiFi is turned on.
- Then select '**DETNSW**' from the list of networks, and type your school login in the popup box then click '**Join**'
- ** You must use **@detnsw** at the end of your username e.g John.citizen@detnsw



Step 2

Click on the WiFi icon  again.

- This time, select '**Open Network Preferences...**' at the bottom of the list.
- Click '**Advanced**' then under the '**Proxies**' tab make sure '**Auto Proxy discovery**' & '**Automatic Proxy Configuration**' are both **ticked**.
- Click '**OK**' then '**Apply**' to save these settings.



Step 3 - Repeat this every day

- Open your Internet browser of choice eg. Safari, Chrome
- In the address bar type **detnsw.net** and hit enter
- The **DoE Internet At Edge Authentication Portal** should appear.
- Use the same username/password as before and click '**Login**'

**This enables your device to access the Internet for an 8hr period so needs to be done each day.

